

80 NB VENT C/W BLIND FLANGE FITTED  
WITH 25 Ø SWAN NECK PIPE.

5 - 150 x 6 THK x 988 LG  
STIFFENING PLATES  
WELDED TO BETWEEN SIDES.

80 NB MAKE-UP C/W  
BLIND FLANGE

TWO - 1000 x 1400 x  
10 THK END PLATES.

4 - 75 x 6 THK x 640 LG  
STIFFENING PLATES  
WELDED TO CHANNELS &  
TANK UNDERSIDE.

50 NB OUTLET FITTED WITH  
BLIND FLANGE FOR TRANSIT.

50 NB DRAINAGE OUTLET  
C/W BLIND FLANGE.

TWO - 3/4" BSP (F) hem (7)  
CONNECTIONS FOR SIGHT  
GLASS ATTACHMENT.

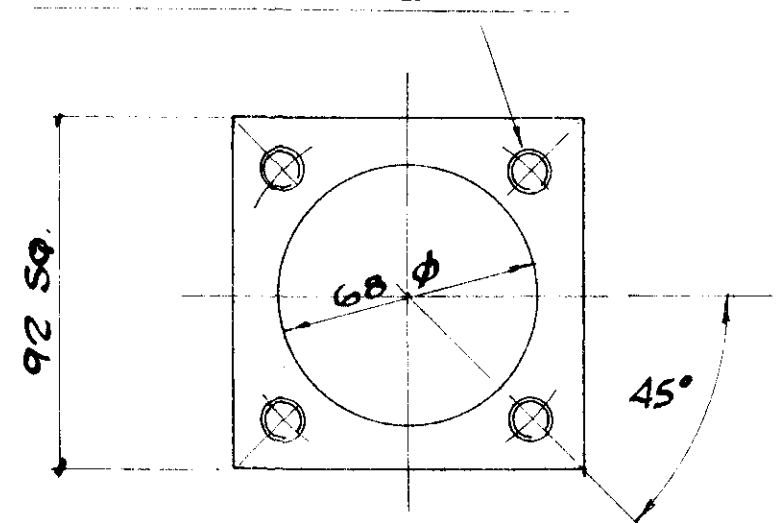
4 LIFTING LUGS  
- SEE DETAIL.

TANK FROM TWO  
1000 x 1392 x 6 THK L  
x 1730 LG WELDED  
AS DETAIL.

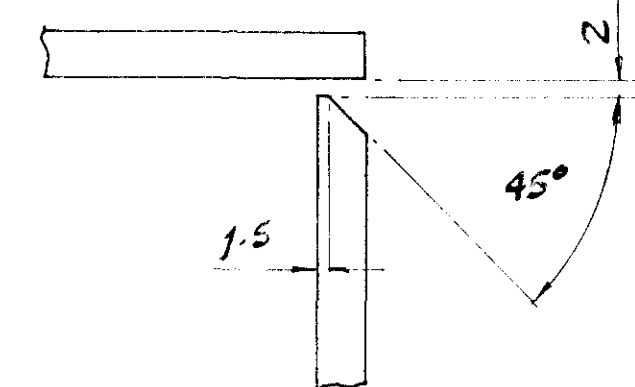
TWO - 102 x 51 RSC  
BASE CHANNELS  
WELDED TO TANK.  
TWO HOLES 18 Ø IN  
EACH FOR M16 BOLTS.

VIEW ON ARROW A

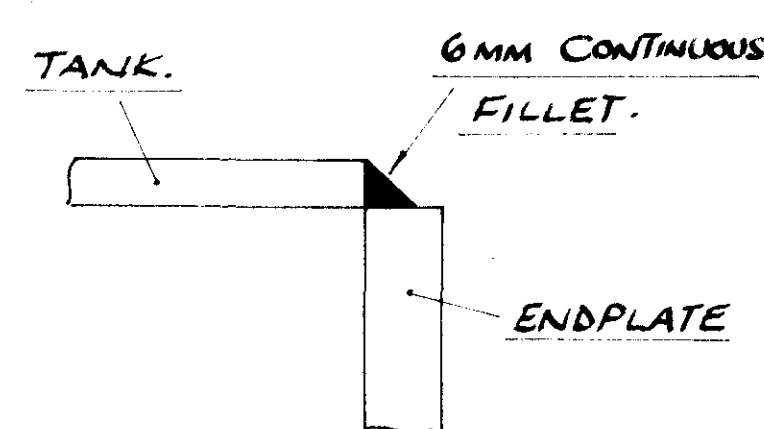
DRILL & TAP 4 HOLES M12 x  
18 DEEP ON 92 PC.D.



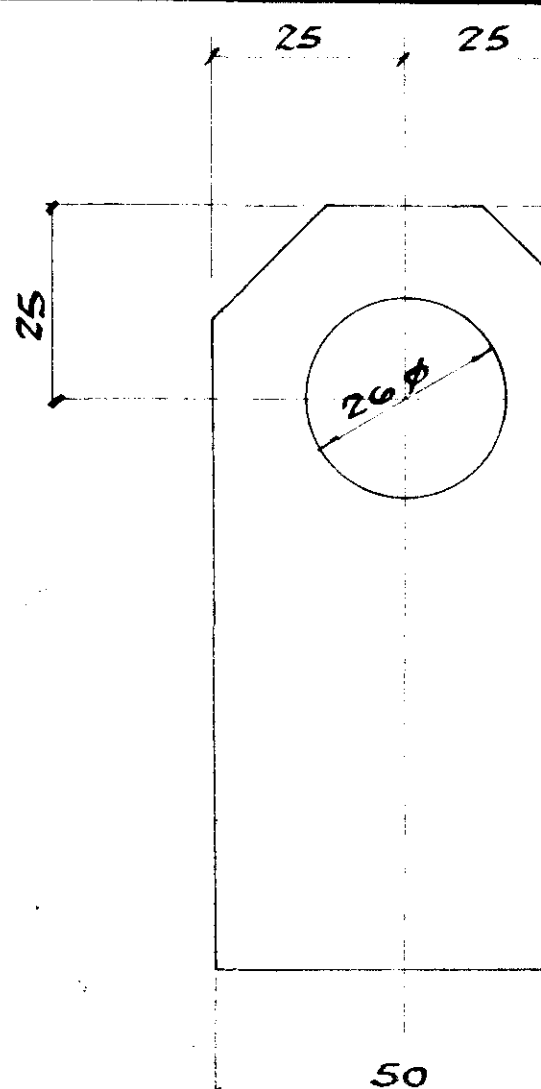
DETAIL OF PAD FOR  
LEVEL SWITCH.



LONGITUDINAL WELD FOR  
TANK SECTIONS.

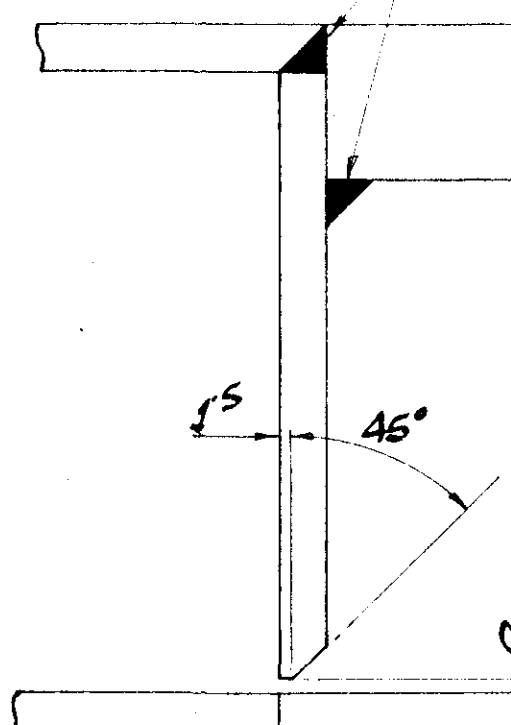


ENDPLATE WELD.



DETAIL OF LIFTING  
(10 THK)

6MM FILLET INS.  
& OUTSIDE.



NOZZLE & PIPE

NOTES:-

1. MATERIAL = BS 4360 - 43A PLATE & A106 PIPE
2. ALL WELDS 6MM CONTINUOUS FILLET MINIMUM
3. ALL FLANGES BS 4504 PN 10 R/R & ALL NOZZLE PIPE
4. FINISH = HOT DIP GALVANISED TO BS 729 AFTER MANUFACTURE & TESTING.
5. TESTING = FILL WITH WATER (WITH 0.5M STAND ON MAKE-UP CONNECTION) ALLOW TO STAND FOR 2 HOURS CHECK FOR LEAKS BEFORE & AFTER GALVANISING TANK AT BOTH ENDS OF BASE CHANNELS FOR TEST.

EST. WEIGHT = 745 KG EMPTY  
MAX. CAPACITY = 2370 LITRES.

RECEIVED  
J.B.E. LTD

REV	BY	DESCRIPTION
1	JAM	REBORN TO CLIENT REQUIREMENTS.
2	JAM	AMENDED WHERE INDICATED
3	JAM	SPARE PART IDENTIFICATION N.B. ADDED

GEA SPIRO-GILLS LTD

TITLE  
DETAIL OF HEADER TANK  
GENERATOR UNIT

FOR J.B.E. LTD  
(PETERHEAD)

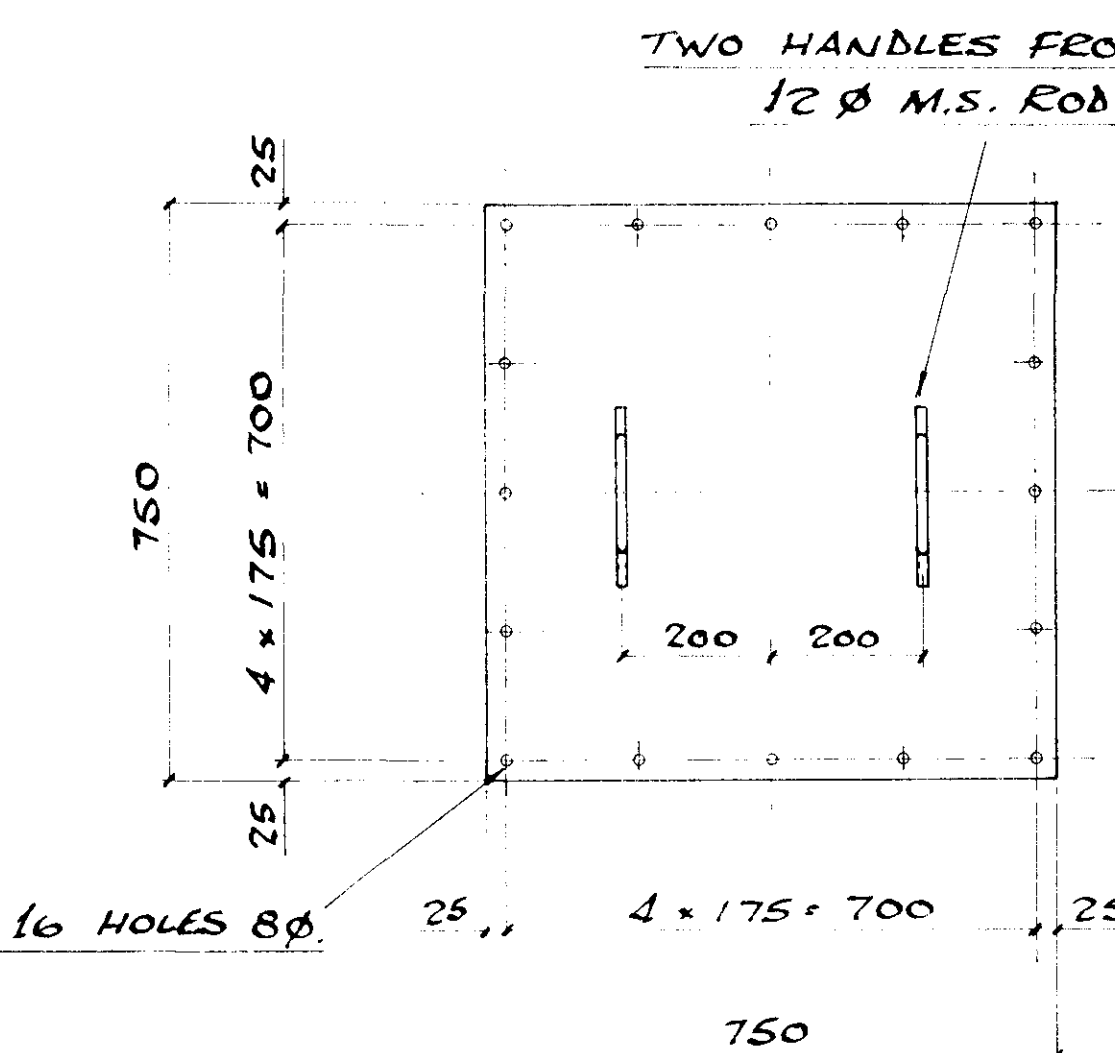
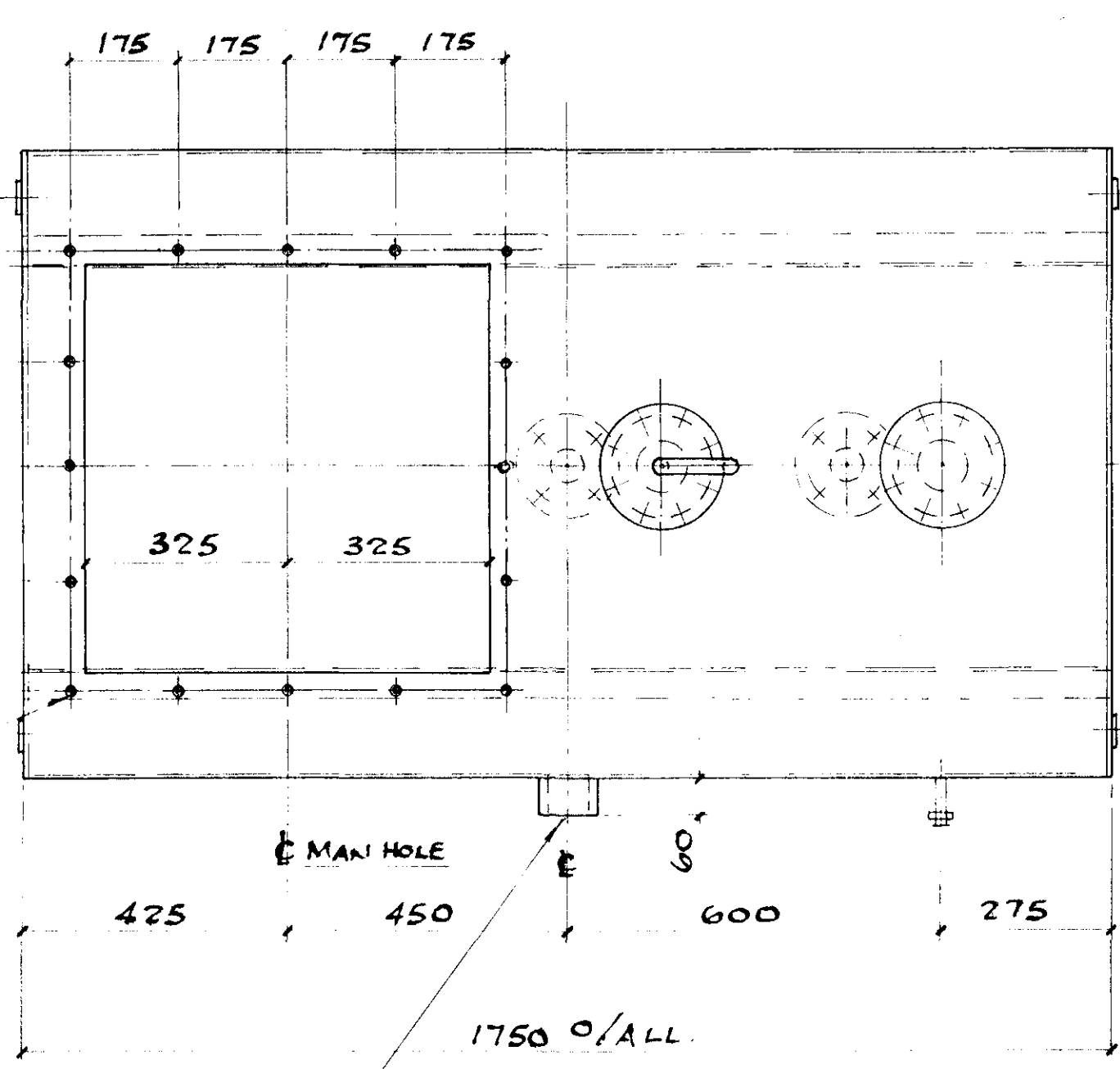
THIS PRINT IS THE PROPERTY OF GEA SPIRO-GILLS LIMITED AND SHALL BE RETURNED ON DEMAND. IT SHALL NOT BE REPRODUCED OR USED DIRECTLY OR INDIRECTLY IN ANY WAY DETRIMENTAL TO THE INTERESTS OF GEA SPIRO-GILLS LIMITED.	SCALE DRAWN CHECKED APPROVED
CUSTOMER'S P.O.	JOB No
07 / 24500	23050

HYDRO - ELECTRIC PETERHEAD GENERATING STATION			
CONTRACT NO. 2052600 / C01	DRAWING NO. 036 / 1328 / 7104	SHEET NO. 01	REV. NO. 03
<b>JOHN BROWN</b> John Brown Engineering Limited Clydebank, Dunbartonshire G81 1YA			
J.B.E. ORDER NUMBER : 07 / 24500			
J.B.E. DRAWING NUMBER: 0998-7206-011 REV 03			

Nº REQ'D = 1 off TANK-AS DRAWN - FOR UNIT 3 GAS TURBINE &  
1 off TANK-OPP.HAND - FOR UNIT 4 GAS TURBINE.

92 SQ. x 60 LG PAD FOR LEVEL SWITCH  
68 Ø HOLE THROUGH PAD & TANK  
SEE DETAIL

10 HOLES DRILLED &  
TAPPED M10.  
NB. 10 OFF M10 x 20 LG SET  
SCREWS REQUIRED/TANK.



DETAIL OF MANHOLE  
COVER